

Original Paper

# Use of the Total Cancer Care System to Enrich Screening for CD30-Positive Solid Tumors for Patient Enrollment Into a Brentuximab Vedotin Clinical Trial: A Pilot Study to Evaluate Feasibility

Bin Li<sup>1</sup>, PhD; Steven A Eschrich<sup>2</sup>, PhD; Anders Berglund<sup>2</sup>, PhD; Melissa Mitchell<sup>3</sup>, BA; David Fenstermacher<sup>4</sup>, PhD; Hadi Danaee<sup>5</sup>, SD; Hongyue Dai<sup>6</sup>, PhD; Daniel Sullivan<sup>7</sup>, MD; William L Trepicchio<sup>5</sup>, PhD; William S Dalton<sup>3</sup>, MD

<sup>1</sup>Takeda Pharmaceuticals International Company, Takeda Data Science Institute, Cambridge, MA, United States

<sup>2</sup>H Lee Moffitt Cancer Center and Research Institute, Biostatistics and Bioinformatics, Tampa, FL, United States

<sup>3</sup>M2Gen, Administration, Tampa, FL, United States

<sup>4</sup>MedImmune, LLC, Research Bioinformatics, Gaithersburg, MD, United States

<sup>5</sup>Takeda Pharmaceuticals International Company, Translational and Biomarker Research, Cambridge, MA, United States

<sup>6</sup>M2Gen, Bioinformatics, Tampa, FL, United States

<sup>7</sup>H Lee Moffitt Cancer Center and Research Institute, Blood and Marrow Transplantation, Tampa, FL, United States

**Corresponding Author:**

Bin Li, PhD

Takeda Pharmaceuticals International Company

Takeda Data Science Institute

40 Landsdowne Street

Cambridge, MA,

United States

Phone: 1 617 679 7041

Fax: 1 617 551 8648

Email: [Bin.Li2@takeda.com](mailto:Bin.Li2@takeda.com)

## Abstract

**Background:** One approach to identify patients who meet specific eligibility criteria for target-based clinical trials is to use patient and tumor registries to prescreen patient populations.

**Objective:** Here we demonstrate that the Total Cancer Care (TCC) Protocol, an ongoing, observational study, may provide a solution for rapidly identifying patients with CD30-positive tumors eligible for CD30-targeted therapies such as brentuximab vedotin.

**Methods:** The TCC patient gene expression profiling database was retrospectively screened for CD30 gene expression determined using HuRSTA-2a520709 Affymetrix arrays (GPL15048). Banked tumor tissue samples were used to determine CD30 protein expression by semiquantitative immunohistochemistry. Statistical comparisons of Z- and H-scores were performed using R statistical software (The R Foundation), and the predictive value, accuracy, sensitivity, and specificity of CD30 gene expression versus protein expression was estimated.

**Results:** As of March 2015, 120,887 patients have consented to the institutional review board–approved TCC Protocol. A total of 39,157 fresh frozen tumor specimens have been collected, from which over 14,000 samples have gene expression data available. CD30 RNA was expressed in a number of solid tumors; the highest median CD30 RNA expression was observed in primary tumors from lymph node, soft tissue (many sarcomas), lung, skin, and esophagus (median Z-scores 1.011, 0.399, 0.202, 0.152, and 1.011, respectively). High level CD30 gene expression significantly enriches for CD30-positive protein expression in breast, lung, skin, and ovarian cancer; accuracy ranged from 72% to 79%, sensitivity from 75% to 100%, specificity from 70% to 76%, positive predictive value from 20% to 40%, and negative predictive value from 95% to 100%.

**Conclusions:** The TCC gene expression profiling database guided tissue selection that enriched for CD30 protein expression in a number of solid tumor types. Such an approach may improve screening efficiency for enrolling patients into biomarker-based clinical trials.

**KEYWORDS**

antitumor agents; CD30 antigen; clinical trial; database management systems; medical oncology

## Introduction

### Background

With the genomic age providing a greater understanding of the complexity of cancer origin and progression, the environment for cancer drug development holds great opportunity but also significant challenge [1,2]. The biopharmaceutical industry has responded by developing a treatment armamentarium that capitalizes on tumor-specific features and improves outcomes for select patient populations. These targeted therapies include small molecule inhibitors, monoclonal antibodies, antibody-drug conjugates (ADCs), and more recently, cell-based immunotherapies [2]. Despite this progress, significant challenges have emerged in the translation of genomic discoveries into clinical practice, resulting in high costs and long development times [1,3,4].

Poor clinical trial accrual rates are a leading barrier to clinical research and can impede trial efficiency [5]. Clearly, the advent of target-based therapies shows promise for identifying and selecting patients most likely to benefit from treatment; however, identifying a subset of patients who meet specific, comprehensive eligibility criteria that includes the presence of specific molecular aberrations is a significant challenge [4,6]. It is not uncommon to screen hundreds of patients over extended periods of time in order to identify a few who are phenotypically/genotypically eligible. In addition, there is often a limited window of opportunity to identify a patient that meets a trial's eligibility criteria before their clinical status deteriorates rendering them ineligible [7]. This risk is most severe in patients with rapidly progressing diseases (metastatic disease, pancreatic or late-stage lung cancers) where treatment and survival timelines are generally very compressed. Unfortunately, these patients are often in greatest need of novel therapies. One approach to address these challenges is to use patient and tumor registries to prescreen patient populations to identify those who are phenotypically/genotypically eligible for target-based clinical trials [7]. This may allow for the identification of the most appropriate patients for treatment in an efficient manner and enhance the understanding of biomarkers found in specific tumors/patient subsets.

### CD30 and Brentuximab Vedotin

CD30, a transmembrane glycoprotein receptor, is a member of the tumor necrosis factor receptor superfamily [8-10]. While the function of CD30 has not been clearly defined, it has been implicated in both cell death and proliferation [11]. It has limited expression in healthy tissue or on resting lymphocytes; normal CD30 expression is restricted to the surface of activated T- and B-cells [12]. In contrast, CD30 is uniformly expressed on the malignant Reed-Sternberg cells of Hodgkin lymphoma (HL) and in systemic anaplastic large cell lymphoma (sALCL) [11,13]. It is also variably expressed in other types of non-HL including cutaneous T-cell lymphoma (CTCL), peripheral T-cell

lymphoma, diffuse large B-cell lymphoma (DLBCL) [14,15], and some follicular lymphomas [16,17]. This expression profile makes CD30 an attractive therapeutic target for antibody-directed therapies. CD30 is also expressed in nonlymphomatous malignancies; however, the level of expression in these tumor types is variable and the prevalence of CD30 expression in these patient populations is low. CD30 expression has been reported in testicular embryonal carcinoma [18,19], multiple myeloma [20], thyroid cancer [21], lung adenocarcinoma and mesothelioma [22], mesenchymal tumors including osteosarcoma and rhabdomyosarcoma [23], undifferentiated nasopharyngeal carcinoma [24], granulocytic sarcoma [25], and acute myelogenous and mast cell leukemia [26,27]. Few data are available on CD30 protein expression across other solid tumor types.

Brentuximab vedotin (Adcetris, Seattle Genetics Inc), an anti-CD30 ADC, represents a therapeutic application that combines the target specificity of a monoclonal antibody with the cell-killing activity of a cytotoxic small-molecule drug [28]. It consists of 3 components: the anti-CD30 chimeric immunoglobulin (Ig) G1 antibody cAC10 [11,13], the microtubule-disrupting agent monomethyl auristatin E (MMAE) [13,29], and a protease-cleavable linker that covalently attaches MMAE to cAC10 [13,29,30]. Upon binding to CD30 on the surface of malignant cells, the ADC-receptor complex is internalized and traffics to the lysosome where MMAE is released by proteolytic cleavage [31]. Binding of MMAE to tubulin disrupts the microtubule network, inducing apoptotic death of the tumor cell [13]. Brentuximab vedotin is being investigated for the treatment of a variety of CD30-positive malignancies. It received accelerated approval from the US Food and Drug Administration for the treatment of HL patients who have relapsed after autologous stem cell transplant (ASCT) or after  $\geq 2$  prior multiagent chemotherapy regimens in patients ineligible for ASCT, as consolidation for HL patients at high risk of relapse or progression post-ASCT, and for the treatment of sALCL patients after failure of  $\geq 1$  prior multiagent chemotherapy regimens [32]. Brentuximab vedotin received conditional approval from the European Medicines Agency for the treatment of adult patients with relapsed/refractory (R/R) CD30-positive HL following ASCT or  $\geq 2$  prior multiagent chemotherapy regimens when ASCT or multiagent chemotherapy is not a treatment option, as consolidation for CD30-positive HL patients at increased risk of relapse or progression following ASCT, and for the treatment of R/R sALCL [33]. Approval was based on the efficacy and safety results from 2 pivotal phase 2 studies in R/R HL [34,35] and sALCL [36,37]. Brentuximab vedotin activity in solid tumors is an active area of investigation; however, due to the variable expression and low prevalence of CD30 expression in these tumors, a mechanism is required to select for CD30-positive patients that may benefit from CD30-targeted treatment.

## Objective

The Total Cancer Care (TCC) Protocol, developed at the Moffitt Cancer Center in 2006 and operationalized by M2Gen, is a personalized cancer care initiative designed to identify and address patients' needs throughout their lifetime, including matching patients to target-based trials [38]. Here we demonstrate that the TCC Protocol may provide a solution for rapidly identifying patients with CD30-positive tumors eligible for CD30-targeted therapies such as brentuximab vedotin.

## Methods

### Total Cancer Care Protocol and Multidimensional Total Cancer Care Data Warehouse

The TCC Protocol is an ongoing, prospective, observational study used by a consortium network of 18 US hospitals that aims to recruit millions of cancer patients to deliver personalized cancer care. It requests the patient's permission to access their entire medical history, access their tumor for research involving molecular/genomic analysis, and be recontacted in the future if a new finding is discovered that could influence their care such as eligibility for a trial. This lifetime prospective follow-up allows for the discovery and validation of biomarkers, epidemiological studies, and the development of evidence-based practice guidelines [39-41].

The consortium network sites enrolled patients into the TCC Protocol and collected tumor, blood, and urine samples. Tissue samples were snap-frozen within 15 minutes of surgical removal, shipped to M2Gen, macrodissected to  $\geq 85\%$  tumor purity, and quantified for the percent of malignancy, cellularity, stroma, normalcy, and necrosis. An oversight committee ensured proper access and use of tissue and that all Health Insurance Portability and Accountability Act and Human Subject Research requirements were met. The consortium network sites provided longitudinal clinical data from consented patients for integration into the multidimensional TCC Data Warehouse, a multifaceted database established to collect, relate, and interpret clinical and molecular data from all patients seen at the H Lee Moffitt Cancer Center and Research Institute and the Moffitt Cancer Center Screening and Prevention Center since 1998. Both the TCC Protocol and the TCC Data Warehouse have been previously described in detail [38].

The TCC Data Warehouse includes, but is not limited to, cancer registry data, electronic medical record data, tissue data, consent data, molecular data, imaging data, and patient self-reported data. Important to the task of matching patients to target-based clinical trials is the ability to directly query phenotypic/genotypic data residing in the Data Warehouse to perform cohort identification. A front-end tool allows investigators with a specific trial in mind to identify groups of patients based on a set of parameters, including patient inclusion/exclusion criteria and molecular signatures that define the initial patient population to be screened. Once the population has been identified and refined, physicians are notified regarding the availability of a trial and patients are evaluated for their overall suitability to participate. Investigators can also assess whether a certain trial is feasible by determining the number of

patients with specific phenotypic/genotypic characteristics available to perform the trial.

### Data Extraction

The TCC Protocol was approved on January 16, 2006, by the University of South Florida Institutional Review Board and has been approved by 20 different institutional review boards across 11 states for the community hospital consortium participating in the TCC Protocol. Clinicopathological data, expression profiling, and archival tissue were extracted using deidentified linkages.

### Measurement of CD30 Gene Expression Levels

Gene expression data were generated from tumors collected from TCC-consented subjects. The TCC patient gene expression profiling database was retrospectively screened for CD30 expression. The data source was the HuRSTA-2a520709 Affymetrix arrays (GEO GPL15048). Briefly, RNA was extracted from fresh frozen tissue, amplified, and hybridized on Affymetrix GeneChips. The Affymetrix expression arrays were normalized using the Micro Array Suite 5.0 algorithm, scaled to a trimmed mean of 500 and log<sub>2</sub> transformed. CD30 expression was extracted using the merck-NM\_001243\_at probeset (GPL15048). One key question to answer in the current work is what tumor types may have a clinically meaningful subset of high CD30 gene expression samples, and for this purpose the entire data set (all tissue types, primary and metastatic disease) was used to generate a global Z-score. Tumors were categorized into 3 groups: low (Z-score  $\leq -1$ ), medium ( $-1 < \text{Z-score} < 1$ ), and high (Z-score  $\geq 1$ ) CD30 gene expression. The distribution plot was generated in MATLAB (R2014B, The MathWorks Inc).

### Measurement of CD30 Protein Expression Levels

Banked formalin-fixed paraffin-embedded (FFPE) tumor tissue samples were provided for CD30 protein expression analysis by semiquantitative immunohistochemistry (IHC) at Quest Diagnostics (Teterboro, NJ). Briefly, tissue slides were deparaffinized using a Dako PT LINK system, washed with a Dako wash buffer, and loaded on the LINK 48 autostainer. The staining run consisted of a peroxidase block, then incubation with either a primary antibody to CD30 (clone Ber-H2 Dako) or a negative mouse IgG1 control (BD Biosciences). Visualization of the staining was performed with Dako Flex polymer-based secondary antibody and chromogen 3,3'-diaminobenzidine.

Stained slides were evaluated by board-certified pathologists at Quest Diagnostics. Based on the eligibility criteria of the phase 3 trial (NCT01578499) of brentuximab vedotin versus physician's choice (methotrexate or bexarotene) in patients with CD30-positive CTCL [42], CD30 positivity was defined as membranous, cytoplasmic, or Golgi CD30 expression by  $\geq 10\%$  of either total lymphocytes or neoplastic cells at any intensity  $> 0$  on a scale of 0 to 3+. Additionally, CD30 expression was semiquantitatively determined using a composite H-score, calculated by summing the product of the percentage of cells stained (0%-100%) at each given staining intensity (0-3+). Samples were assigned to the CD30-positive protein expression

group if their H-score was  $\geq 10$  or the CD30-negative protein expression group if their H-score was  $< 10$ .

### Enrichment for CD30 Immunohistochemistry Staining Positivity

Statistical comparisons of Z- and H-scores were performed using R statistical software (The R Foundation), and the caret R-package was used to estimate the predictive value, accuracy, sensitivity, and specificity of CD30 gene expression.

## Results

### Patient Population

As of March 2015, the Data Warehouse had a total patient population of 426,284 patients, 120,887 of whom had consented to the TCC Protocol. In total 39,157 fresh frozen tumor specimens were collected, from which over 14,000 samples have been analyzed for gene expression (Table 1).

**Table 1.** Total number of patients enrolled in the Total Cancer Care Protocol and the type and number of molecular assays performed on tumor specimens as of March 2015.

Patients enrolled/assays performed	Number
TCC <sup>a</sup> Protocol as of March 2015	
Consented patients	120,887
Tumors/tissues collected	39,157
Gene expression profiles	14,218
Data generated from specimens	
CEL files <sup>b</sup> (gene expression data)	14,218
Targeted exome sequencing samples	4016
Whole exome sequencing samples	933
Whole genome sequencing (melanoma)	13
SNP <sup>c</sup> /CNV <sup>d</sup> (lung, breast, colon) samples with normal pairs	559
RNA sequencing samples	696

<sup>a</sup>TCC: Total Cancer Care.

<sup>b</sup>CEL files: data files created by Affymetrix DNA microarray image analysis software.

<sup>c</sup>SNP: single-nucleotide polymorphism.

<sup>d</sup>CNV: copy-number variation.

The following steps were taken to identify patients with a solid tumor indication and high CD30 gene expression (defined as CD30 global Z-score  $\geq 1$ ) from the TCC Data Warehouse. Of the 120,887 patients who had consented to the TCC Protocol, 99,241 patients had an active TCC consent (not withdrawn from the TCC Protocol and site open to accrual), 49,562 patients

were alive, 12,802 of whom had a tumor specimen collected as part of TCC, and gene expression profiles were available for 8307 of these patients. These gene expression profiles indicated that across solid tumor indications, 1138 patients had a CD30 Z-score  $\geq 1$  (Table 2).

**Table 2.** Identification and refinement of patient populations with a solid tumor indication with a CD30 Z-score  $\geq 1$  (n=1138) using the Total Cancer Care Data Warehouse.

TCC <sup>a</sup> patients meeting the criteria	Number
Patients consented to the TCC Protocol	120,887
Patients with an active TCC consent	99,241
Patients with a vital status of "Alive"	49,562
Patients with clinical FFPE <sup>b</sup> available	12,802
Patients with a CEL file <sup>c</sup> to evaluate CD30 mRNA expression	8307
Patients who express CD30 with a Z-score $\geq 1$	1138

<sup>a</sup>TCC: Total Cancer Care.

<sup>b</sup>FFPE: formalin-fixed paraffin-embedded.

<sup>c</sup>CEL files: data files created by Affymetrix DNA microarray image analysis software.

### CD30 Gene Expression Levels in Total Cancer Care Data Warehouse

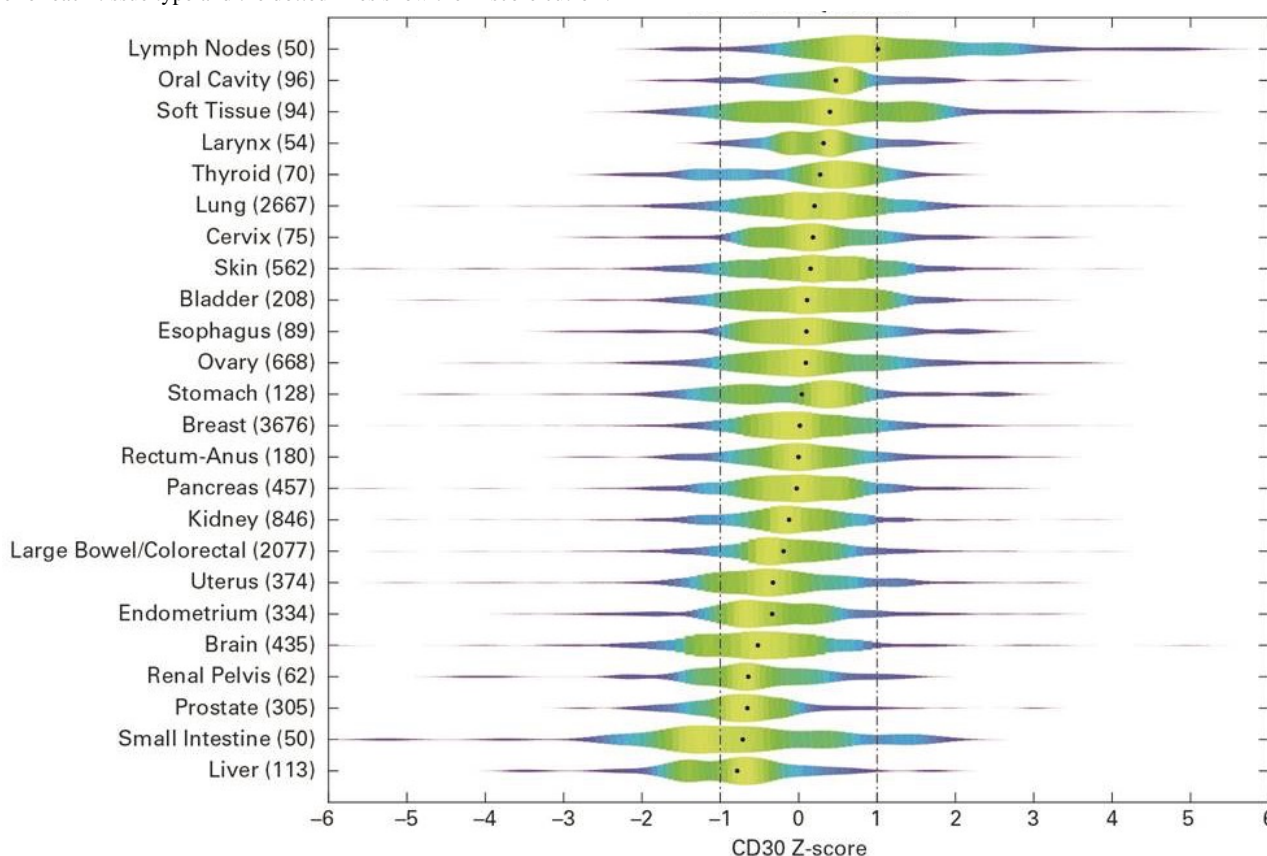
CD30 expression across all solid tumors (n=14,218) is shown grouped by primary site in [Figure 1](#). Aside from lymph nodes, oral cavity tumors and soft tissue (many sarcomas) show the

highest median CD30 RNA expression, followed by tumors of the larynx, thyroid, lung, cervix, and skin (mostly melanoma). [Table 3](#) lists the number of samples available, percentage of samples that tested positive (Z-score  $\geq 1$ ) in each group, and summarizes over or under expression of CD30. Soft tissue, skin, lung, and ovary were significantly overrepresented ( $P < .05$ ).

**Table 3.** The enrichment of tumor site of origin for overall Z-Scores  $\geq 1$  (threshold for high-CD30 gene expression group).

Tissue type	Samples n	Samples with Z-score $\geq 1$ n (%)	Fisher exact	Mean	Median	Standard deviation
Lymph nodes	50	25 (50)	8.12E-10	1.271	1.011	1.382
Soft tissue	94	30 (32)	5.03E-06	0.512	0.399	1.237
Ovary	668	141 (21)	6.23E-08	0.182	0.092	1.104
Oral cavity	96	20 (21)	0.051	0.444	0.475	0.887
Lung	2667	503 (19)	2.71E-17	0.178	0.202	0.986
Esophagus	89	16 (18)	0.217	0.092	0.099	0.988
Skin	562	101 (18)	0.003	0.062	0.152	1.132
Cervix	75	13 (17)	0.315	0.204	0.183	0.939
Bladder	208	35 (17)	0.185	0.087	0.107	0.996
Breast	3676	529 (14)	0.122	0.065	0.015	0.913
Rectum-anus	180	26 (14)	0.743	0.084	-0.003	0.961
Larynx	54	7 (13)	1.000	0.285	0.317	0.648
Small intestine	50	6 (12)	1.000	-0.721	-0.713	1.356
Stomach	128	15 (12)	0.606	-0.061	0.040	1.125
Uterus	374	43 (11)	0.252	-0.251	-0.329	1.036
Pancreas	457	49 (11)	0.071	-0.046	-0.026	0.940
Thyroid	70	7 (10)	0.485	0.024	0.274	0.946
Endometrium	334	30 (9)	0.012	-0.293	-0.339	0.986
Large bowel /colorectal	2077	178 (9)	1.76E-14	-0.152	-0.193	0.871
Kidney	846	53 (6)	2.72E-12	-0.154	-0.123	0.866
Brain	435	24 (6)	3.51E-08	-0.500	-0.520	1.059
Renal pelvis	62	3 (5)	0.041	-0.612	-0.643	1.022
Prostate	305	9 (3)	1.92E-10	-0.636	-0.655	0.802
Liver	113	2 (2)	2.22E-05	-0.826	-0.784	0.915

**Figure 1.** Density plot of CD30 expression Z-score across Total Cancer Care primary tumor types with  $\geq 50$  samples. The dots indicate the median value for each tissue type and the dotted lines show the Z-score cut-off.



## CD30 Protein Expression Levels in Archived Tumor Samples and Enrichment for CD30

### Immunohistochemistry Staining Positivity

High-level CD30 gene expression was strongly associated with IHC staining positivity. Due to the large number of tumor samples available in the TCC tissue bank for breast, large bowel, lung, skin, and ovary tumors, these tissue types were selected for confirmation of CD30 RNA expression at the protein level using IHC staining. Figure 2 A shows representative images of IHC CD30 staining for 2 lung adenocarcinoma FFPE selected based on TCC Data Warehouse CD30 gene expression. Figure 2 B shows the distribution of gene expression Z-values and IHC H-scores among all analyzed samples. For lung, skin, breast, and ovary samples, in the CD30 RNA-low group 0 out of 39 samples tested IHC-positive, in the RNA-medium group 1 out of 39 samples tested positive, and in the RNA-high group 12 out of 39 samples tested positive (Table 4). There are several reasons that may explain why only a portion of RNA-high samples (12 out of 39) tested IHC-positive. Direct estimation of CD30 expression has its limitations and this is especially true for cell-surface proteins. IHC may underreport true protein expression levels since cell surface proteins such as CD30 are continuously internalized, degraded, and reexpressed over time. It is possible that RNA could be a more sensitive measure for

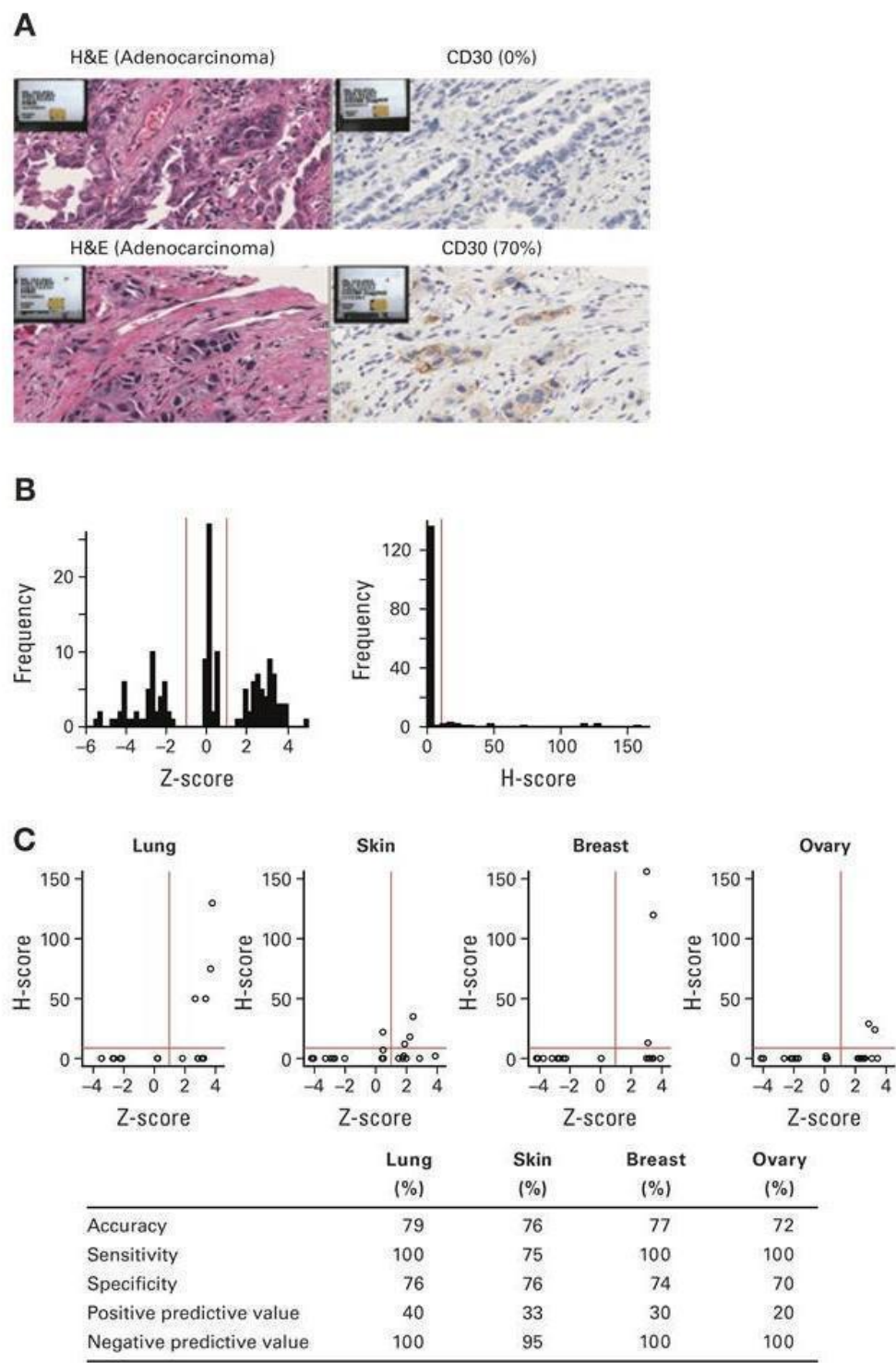
determining CD30 expression. A tumor sample expressing CD30 RNA but having no discernible protein expression during a discrete snapshot in time may still be able to respond to brentuximab vedotin therapy as the protein is reexpressed at the cell surface. For example, brentuximab vedotin has demonstrated significant activity in R/R DLBCL patients with variable or even apparently absent CD30 expression levels, with objective responses in 44% (17/39) and 27% (6/22) of patients, respectively [43,44]. Further studies in this area are underway. Table 4 shows that 9 or 10 random samples were chosen from RNA-low, RNA-middle, or RNA-high groups. This is an arbitrary number and is not proportional to number of samples in each group, since the goal of this work was to evaluate whether RNA expression can be used as a patient selection/enrichment strategy. All large bowel tissue samples stained negative for CD30 expression (data not shown).

Considering samples from all 4 CD30 positive tumor types, there was a significantly higher proportion of CD30 IHC-positive samples in the RNA-high group relative to low and median groups ( $P=.00018$  and  $.0015$ , respectively). Across these same tumor types (lung, skin, breast, and ovary), accuracy ranged from 72% to 79%, sensitivity from 75% to 100%, specificity from 70% to 76%, positive predictive value from 20% to 40%, and negative predictive value from 95% to 100% (Figure 2 C).

**Table 4.** Enrichment of immunohistochemistry-positive samples from the CD30 RNA-high, -median and -low groups for breast, lung, skin, and ovarian cancer for the immunohistochemistry staining.

Diagnosis	Samples with RNA screened n (RNA-high)	RNA-low samples		RNA-middle samples		RNA-high samples	
		Screened n	CD30-positive n (%)	Screened n	CD30-positive n (%)	Screened n	CD30-positive n (%)
Breast	3676 (529)	10	0 (0)	10	0 (0)	10	3 (30)
Lung	2667 (503)	9	0 (0)	10	0 (0)	10	4 (40)
Ovary	668 (141)	10	0 (0)	9	0 (0)	10	2 (20)
Skin	562 (101)	10	0 (0)	10	1 (10)	9	3 (33)

**Figure 2.** (A) Representative images of immunohistochemistry CD30 staining for 2 lung adenocarcinoma formalin-fixed paraffin-embedded slides selected based on Total Cancer Care Data Warehouse CD30 gene expression. Top: Low (0%) CD30 protein expression (H-score = 0) from medium (Z-score = 0.173) CD30 gene expression sample (ML-03-054). Bottom: High (70%) CD30 protein expression (H-score = 130) from high (Z-score = 3.784) CD30 gene expression sample (ML-03-065). (B) Distribution of gene expression Z-scores and immunohistochemistry H-scores among samples selected from the Total Cancer Care Data Warehouse. (C) Evaluation of CD30 gene expression-based enrichment of high CD30 protein expression samples.



FPE, formalin-fixed paraffin-embedded; TCC, Total Cancer Care;  
H&E, hematoxylin and eosin; IHC, immunohistochemistry;

## Discussion

### Principal Findings

This study reports on the utility of the TCC Protocol and demonstrates how the TCC Protocol may provide a solution for rapidly identifying patients with CD30-positive tumors eligible for treatment with the targeted therapy brentuximab vedotin. Gene expression screening was shown to enrich for protein-level CD30 expression in a number of solid tumor types, thereby demonstrating an important first filter for targeted treatment trials.

Targeted therapy is usually effective in a subset of patients with particular molecular characteristics; however, as a consequence of conducting clinical trials only in these strictly selected populations, the eligible patient pool can be low and accrual becomes more difficult [4,6]. In addition, prescreening a population of patients can be a lengthy process. Not all centers have the facilities to identify a full range of potential biomarkers, and sending tumor tissue to a central laboratory for molecular analysis to identify eligible patients can substantially extend the time between molecular analysis and treatment initiation [7]. Here we demonstrate that the TCC Protocol could help expedite clinical trials of therapies that target rare cancer populations.

In the clinical setting, patient enrollment to trials is frequently determined via protein-based IHC assay. Our results showed that CD30 expression at the RNA level significantly enriched for high CD30 protein expression and that the RNA expression level can be used as a cutoff to reliably enrich for high protein expression. Using the TCC Data Warehouse, its large volume of samples, and pregenerated large-scale expression data, we were able to identify and rank solid tumors that express CD30. CD30 is uniformly expressed in HL and sALCL [11,13]; however, few data are available on CD30 protein expression in solid tumors. Therefore a mechanism is required to select for patients with CD30-positive solid tumors that may benefit from CD30-targeted treatment. The current study indicates CD30 RNA is expressed in a number of solid tumors, and expression is highly variable, being expressed in only a subset of patients' tumors with varying intensities. Aside from lymph nodes, oral cavity tumors and soft tissue (many sarcomas) show the highest median CD30 RNA expression, followed by tumors of the larynx, thyroid, lung, cervix, and skin (mostly melanoma). Patients with these solid tumors could serve as a baseline cohort for any subsequent subject selection for a trial where CD30 expression is used as part of the selection criteria. We acknowledge that the global Z-score cutoff used in the study may not fit well with cancer types that have very high (eg, lymph nodes) or very low (eg, liver) CD30 gene expression levels,

indicating the potential future need to adjust the Z-score cutoff in individual cancer type focused clinical trials.

Tissue arrays can screen through tens to perhaps as many as several hundred samples [45]; however, the variability in technical factors and the resulting quality of tissue specimens means that the integrity of tissue samples are in many instances compromised. The TCC Protocol uses well-established, standardized processes for collecting and storing biological samples. Thousands of tumor samples can be simultaneously screened at the RNA level, providing sufficient power to identify low-prevalence markers, including CD30. Matched tumor samples collected during the same protocol period enables direct comparison between gene and protein levels within the same tumor biopsy.

IHC analysis confirmed CD30 expression at the protein level and indicates that CD30 is expressed on tumor cells and not on infiltrating lymphocytes. CD30 gene expression can therefore be considered a reliable indication of CD30 protein expression in a number of solid tumors that may benefit from treatment with a targeted CD30 therapy such as brentuximab vedotin, including breast, melanoma, ovarian, and non-small cell lung cancer. Conversely, no colorectal cancer samples (n=28) had IHC-positive CD30 protein expression (data not shown).

The TCC Protocol is unique in its approach, coordinating patient records and standardizing data collection and sample handling protocols between a wide consortium network of 18 hospitals, resulting in an extremely large reference dataset. Individual clinical studies are heavily selected for a particular study population, exclusively examining small, specialized groups, making population-level variability much harder to identify. By contrast, the TCC Protocol and the Data Warehouse captures a much larger, real-world representation of disease prevalence and may be more likely to detect gene/signature prevalence without the bias of a particular trial population.

### Conclusions

High-level CD30 gene expression can be used to significantly enrich patient populations for CD30 protein expression and could be used to guide future protein screening. The TCC Data Warehouse is not anonymized; patients are consented and enrolled into the TCC study with the full knowledge that future screening of the Data Warehouse may identify them as potential candidates for novel treatments and allows for patients to be recontacted. A uniform, large reference data warehouse like TCC may substantially increase the screening efficiency for enrolling patients into biomarker-based trials and as a consequence overcome difficulties associated with recruitment and accelerate the clinical development process. Such an approach could help to expedite clinical trials of therapies that target rare cancer populations.

### Acknowledgments

The authors would like to thank all our colleagues and partners who have helped make Total Cancer Care a success: Shane Huntsman, Director, Operational Services and Support, M2Gen; Shawn Brass, Biorepository Project Coordinator, M2Gen; Dr Ron Luff and Dr Marise McNeeley, Pathologists, Quest Diagnostics; H Lee Moffitt Cancer Center and Research Institute, Tampa, FL; Boca Raton Community Hospital, Boca Raton, FL; Watson Clinic, Lakeland, FL; Martin Memorial Health System, Stuart, FL; Morton Plant Mease, Clearwater, FL; St. Joseph's Hospital, Tampa, FL; Sarasota Memorial Hospital, Sarasota, FL; Tallahassee

Memorial Hospital, Tallahassee, FL; Baptist Health South Florida, Miami, FL; Greenville Hospital System, Greenville, SC; Carolinas Medical Center, Charlotte, NC; St. Joseph's Candler Health System, Savannah, GA; Hartford Hospital, Hartford, CT; St. Vincent Hospital, Indianapolis, IN; Southeast Nebraska Cancer Center, Lincoln, NE; Our Lady of the Lake, Baton Rouge, LA; Marquette General Hospital System, Marquette, MI; and the University of Louisville, Louisville, KY. David Fenstermacher's work was conducted at Virginia Commonwealth University, Richmond, VA.

The authors would also like to acknowledge the writing assistance of Hannah Finnigan of FireKite, an Ashfield company, part of UDG Healthcare PLC during the development of this manuscript, which was funded by Millennium Pharmaceuticals, Inc and complied with the Good Publication Practice 3 ethical guidelines (Battisti WP, et al. *Ann Intern Med*;163:461-464, 2015).

Research was supported by the sponsor, Millennium Pharmaceuticals Inc, a wholly owned subsidiary of Takeda Pharmaceutical Company Limited. The sponsor also reviewed and approved the manuscript for publication.

## Conflicts of Interest

Bin Li, Hadi Danaee, and William L Trepicchio have been employed by Takeda Pharmaceuticals International Co. Steven A Eschrich has been employed by, compensated in a leadership role for, and held ownership in Cuergenx, Inc; received research funding from M2Gen; and has a patent or intellectual property interest in Moffitt Cancer Center. Melissa Mitchell has been employed by M2Gen. David Fenstermacher has been compensated in a consulting or advisory role by M2Gen. Hongyue Dai has been employed by, compensated in a leadership role for, owns stock in, and has a patent or intellectual property interest in M2Gen and has been employed by and owns stock in Merck. William S Dalton has been employed by, compensated in a leadership role for, and owns stock in M2Gen; received honoraria from Genentech; and received research funding from Millennium Pharmaceuticals Inc, a wholly owned subsidiary of Takeda Pharmaceutical Company Limited. Anders Berglund and Daniel Sullivan have no conflicts of interest to disclose.

## References

1. Ranson M, Jayson G. Targeted antitumour therapy—future perspectives. *Br J Cancer*. Jun 2005;92 Suppl 1:S28-S31. [FREE Full text] [doi: [10.1038/sj.bjc.6602606](https://doi.org/10.1038/sj.bjc.6602606)] [Medline: [15928656](https://pubmed.ncbi.nlm.nih.gov/15928656/)]
2. Ow TJ, Sandulache VC, Skinner HD, Myers JN. Integration of cancer genomics with treatment selection: from the genome to predictive biomarkers. *Cancer*. Nov 15, 2013;119(22):3914-3928. [FREE Full text] [doi: [10.1002/cncr.28304](https://doi.org/10.1002/cncr.28304)] [Medline: [24037788](https://pubmed.ncbi.nlm.nih.gov/24037788/)]
3. Kaitin KI, DiMasi JA. Pharmaceutical innovation in the 21st century: new drug approvals in the first decade, 2000-2009. *Clin Pharmacol Ther*. Feb 2011;89(2):183-188. [doi: [10.1038/clpt.2010.286](https://doi.org/10.1038/clpt.2010.286)] [Medline: [21191382](https://pubmed.ncbi.nlm.nih.gov/21191382/)]
4. Sleijfer S, Bogaerts J, Siu LL. Designing transformative clinical trials in the cancer genome era. *J Clin Oncol*. May 20, 2013;31(15):1834-1841. [doi: [10.1200/JCO.2012.45.3639](https://doi.org/10.1200/JCO.2012.45.3639)] [Medline: [23589555](https://pubmed.ncbi.nlm.nih.gov/23589555/)]
5. Cheng SK, Dietrich MS, Dilts DM. A sense of urgency: evaluating the link between clinical trial development time and the accrual performance of cancer therapy evaluation program (NCI-CTEP) sponsored studies. *Clin Cancer Res*. Nov 15, 2010;16(22):5557-5563. [FREE Full text] [doi: [10.1158/1078-0432.CCR-10-0133](https://doi.org/10.1158/1078-0432.CCR-10-0133)] [Medline: [21062929](https://pubmed.ncbi.nlm.nih.gov/21062929/)]
6. Kim ES, Bernstein D, Hilsenbeck SG, Chung CH, Dicker AP, Ersek JL, et al. Modernizing eligibility criteria for molecularly driven trials. *J Clin Oncol*. Sep 01, 2015;33(25):2815-2820. [doi: [10.1200/JCO.2015.62.1854](https://doi.org/10.1200/JCO.2015.62.1854)] [Medline: [26195710](https://pubmed.ncbi.nlm.nih.gov/26195710/)]
7. Rodón J, Saura C, Dienstmann R, Vivancos A, Ramón S, Baselga J, et al. Molecular prescreening to select patient population in early clinical trials. *Nat Rev Clin Oncol*. Apr 03, 2012;9(6):359-366. [doi: [10.1038/nrclinonc.2012.48](https://doi.org/10.1038/nrclinonc.2012.48)] [Medline: [22473105](https://pubmed.ncbi.nlm.nih.gov/22473105/)]
8. de Bruin PC, Gruss HJ, van der Valk P, Willemze R, Meijer CJ. CD30 expression in normal and neoplastic lymphoid tissue: biological aspects and clinical implications. *Leukemia*. Oct 1995;9(10):1620-1627. [Medline: [7564499](https://pubmed.ncbi.nlm.nih.gov/7564499/)]
9. Dürkop H, Latza U, Hummel M, Eitelbach F, Seed B, Stein H. Molecular cloning and expression of a new member of the nerve growth factor receptor family that is characteristic for Hodgkin's disease. *Cell*. Feb 07, 1992;68(3):421-427. [Medline: [1310894](https://pubmed.ncbi.nlm.nih.gov/1310894/)]
10. Gruss HJ, Duyster J, Herrmann F. Structural and biological features of the TNF receptor and TNF ligand superfamilies: interactive signals in the pathobiology of Hodgkin's disease. *Ann Oncol*. 1996;7 Suppl 4:19-26. [Medline: [8836404](https://pubmed.ncbi.nlm.nih.gov/8836404/)]
11. Wahl AF, Klussman K, Thompson JD, Chen JH, Francisco LV, Risdon G, et al. The anti-CD30 monoclonal antibody SGN-30 promotes growth arrest and DNA fragmentation in vitro and affects antitumor activity in models of Hodgkin's disease. *Cancer Res*. Jul 01, 2002;62(13):3736-3742. [FREE Full text] [Medline: [12097283](https://pubmed.ncbi.nlm.nih.gov/12097283/)]
12. Stein H, Foss HD, Dürkop H, Marafioti T, Delsol G, Pulford K, et al. CD30(+) anaplastic large cell lymphoma: a review of its histopathologic, genetic, and clinical features. *Blood*. Dec 01, 2000;96(12):3681-3695. [FREE Full text] [Medline: [11090048](https://pubmed.ncbi.nlm.nih.gov/11090048/)]
13. Francisco JA, Cerveny CG, Meyer DL, Mixan BJ, Klussman K, Chace DF, et al. cAC10-vcMMAE, an anti-CD30-monomethyl auristatin E conjugate with potent and selective antitumor activity. *Blood*. Aug 15, 2003;102(4):1458-1465. [FREE Full text] [doi: [10.1182/blood-2003-01-0039](https://doi.org/10.1182/blood-2003-01-0039)] [Medline: [12714494](https://pubmed.ncbi.nlm.nih.gov/12714494/)]

14. Catovsky D, Muller-Hermelink H, Ralfkiaer E. Mature T-NK-cell neoplasms. In: Inwerdlow S, Campo E, Harris N, Jaffe E, Pileri S, Stein H, editors. WHO Classification of Tumours of Haematopoietic and Lymphoid Tissues. 4th edition. Lyon. International Agency for Research on Cancer; 2008;269-319.
15. Muller-Hermelink H, Montserrat E, Catovsky D, Campo E, Harris N, Stein H. Mature B-cell neoplasms. In: Inwerdlow S, Campo E, Harris N, Jaffe E, Pileri S, Stein H, editors. WHO Classification of Tumours of Haematopoietic and Lymphoid Tissues. 4th edition. Lyon. International Agency for Research on Cancer; 2008;179-268.
16. Gardner LJ, Polski JM, Evans HL, Perkins SL, Dunphy CH. CD30 expression in follicular lymphoma. Arch Pathol Lab Med. Aug 2001;125(8):1036-1041. [doi: [10.1043/0003-9985\(2001\)125<1036:CEIFL>2.0.CO;2](https://doi.org/10.1043/0003-9985(2001)125<1036:CEIFL>2.0.CO;2)] [Medline: [11473453](#)]
17. Horie R, Watanabe T. CD30: expression and function in health and disease. Semin Immunol. Dec 1998;10(6):457-470. [doi: [10.1006/smim.1998.0156](https://doi.org/10.1006/smim.1998.0156)] [Medline: [9826579](#)]
18. Dürkop H, Foss HD, Eitelbach F, Anagnostopoulos I, Latza U, Pileri S, et al. Expression of the CD30 antigen in non-lymphoid tissues and cells. J Pathol. Apr 2000;190(5):613-618. [doi: [10.1002/\(SICI\)1096-9896\(200004\)190:5<613::AID-PATH559>3.0.CO;2-0](https://doi.org/10.1002/(SICI)1096-9896(200004)190:5<613::AID-PATH559>3.0.CO;2-0)] [Medline: [10727988](#)]
19. Lau SK, Thomas P, Weiss LM. Immunohistochemical evaluation of CON6D/B5: a new CD30 monoclonal antibody. Appl Immunohistochem Mol Morphol. May 2010;18(3):273-277. [doi: [10.1097/PAI.0b013e3181c81d31](https://doi.org/10.1097/PAI.0b013e3181c81d31)] [Medline: [20090517](#)]
20. Menke DM, Horny HP, Griesser H, Atkinson EJ, Kaiserling E, Kyle RA. Immunophenotypic and genotypic characterisation of multiple myelomas with adverse prognosis characterised by immunohistological expression of the T cell related antigen CD45RO (UCLH-1). J Clin Pathol. Jun 1998;51(6):432-437. [FREE Full text] [Medline: [9771441](#)]
21. Trovato M, Villari D, Ruggeri RM, Quattrocchi E, Fragetta F, Simone A, et al. Expression of CD30 ligand and CD30 receptor in normal thyroid and benign and malignant thyroid nodules. Thyroid. Jul 2001;11(7):621-628. [doi: [10.1089/105072501750362682](https://doi.org/10.1089/105072501750362682)] [Medline: [11484890](#)]
22. Garcia-Prats MD, Ballestin C, Sotelo T, Lopez-Encuentra A, Mayordomo JI. A comparative evaluation of immunohistochemical markers for the differential diagnosis of malignant pleural tumours. Histopathology. May 1998;32(5):462-472. [Medline: [9639123](#)]
23. Garcia-Prats MD, Ballestin C, Sotelo T, Lopez-Encuentra A, Mayordomo JI. A comparative evaluation of immunohistochemical markers for the differential diagnosis of malignant pleural tumours. Histopathology. May 1998;32(5):462-472. [Medline: [9639123](#)]
24. Kneile JR, Tan G, Suster S, Wakely PE. Expression of CD30 (Ber-H2) in nasopharyngeal carcinoma, undifferentiated type and lymphoepithelioma-like carcinoma. A comparison study with anaplastic large cell lymphoma. Histopathology. Jun 2006;48(7):855-861. [doi: [10.1111/j.1365-2559.2006.02449.x](https://doi.org/10.1111/j.1365-2559.2006.02449.x)] [Medline: [16722935](#)]
25. Fickers M, Theunissen P. Granulocytic sarcoma with expression of CD30. J Clin Pathol. Sep 1996;49(9):762-763. [FREE Full text] [Medline: [9038763](#)]
26. Gattei V, Degan M, Gloghini A, De Iuliis A, Improta S, Rossi FM, et al. CD30 ligand is frequently expressed in human hematopoietic malignancies of myeloid and lymphoid origin. Blood. Mar 15, 1997;89(6):2048-2059. [FREE Full text] [Medline: [9058727](#)]
27. Sotlar K, Cerny-Reiterer S, Petat-Dutter K, Hessel H, Berezowska S, Müllauer L, et al. Aberrant expression of CD30 in neoplastic mast cells in high-grade mastocytosis. Mod Pathol. Apr 2011;24(4):585-595. [FREE Full text] [doi: [10.1038/modpathol.2010.224](https://doi.org/10.1038/modpathol.2010.224)] [Medline: [21186345](#)]
28. Katz J, Janik JE, Younes A. Brentuximab vedotin (SGN-35). Clin Cancer Res. Oct 15, 2011;17(20):6428-6436. [FREE Full text] [doi: [10.1158/1078-0432.CCR-11-0488](https://doi.org/10.1158/1078-0432.CCR-11-0488)] [Medline: [22003070](#)]
29. Doronina SO, Toki BE, Torgov MY, Mendelsohn BA, Cervený CG, Chace DF, et al. Development of potent monoclonal antibody auristatin conjugates for cancer therapy. Nat Biotechnol. Jul 2003;21(7):778-784. [doi: [10.1038/nbt832](https://doi.org/10.1038/nbt832)] [Medline: [12778055](#)]
30. Okeley NM, Miyamoto JB, Zhang X, Sanderson RJ, Benjamin DR, Sievers EL, et al. Intracellular activation of SGN-35, a potent anti-CD30 antibody-drug conjugate. Clin Cancer Res. Feb 01, 2010;16(3):888-897. [FREE Full text] [doi: [10.1158/1078-0432.CCR-09-2069](https://doi.org/10.1158/1078-0432.CCR-09-2069)] [Medline: [20086002](#)]
31. Sutherland MSK, Sanderson RJ, Gordon KA, Andreyka J, Cervený CG, Yu C, et al. Lysosomal trafficking and cysteine protease metabolism confer target-specific cytotoxicity by peptide-linked anti-CD30-auristatin conjugates. J Biol Chem. Apr 14, 2006;281(15):10540-10547. [FREE Full text] [doi: [10.1074/jbc.M510026200](https://doi.org/10.1074/jbc.M510026200)] [Medline: [16484228](#)]
32. Seattle Genetics Inc. Adcetris (brentuximab vedotin) for injection: full prescribing information. URL: [http://www.seattlegenetics.com/pdf/adcetris\\_USPI.pdf](http://www.seattlegenetics.com/pdf/adcetris_USPI.pdf) [accessed 2017-01-05] [WebCite Cache ID 6nHyix9Xv]
33. Seattle Genetics Inc. Adcetris 50 mg powder for concentrate for solution for infusion: summary of product characteristics. URL: <https://www.medicines.org.uk/emc/medicine/27173> [accessed 2017-01-05] [WebCite Cache ID 6n11MyEln]
34. Gopal AK, Chen R, Smith SE, Ansell SM, Rosenblatt JD, Savage KJ, et al. Durable remissions in a pivotal phase 2 study of brentuximab vedotin in relapsed or refractory Hodgkin lymphoma. Blood. Feb 19, 2015;125(8):1236-1243. [FREE Full text] [doi: [10.1182/blood-2014-08-595801](https://doi.org/10.1182/blood-2014-08-595801)] [Medline: [25533035](#)]
35. Younes A, Gopal AK, Smith SE, Ansell SM, Rosenblatt JD, Savage KJ, et al. Results of a pivotal phase II study of brentuximab vedotin for patients with relapsed or refractory Hodgkin's lymphoma. J Clin Oncol. Jun 20, 2012;30(18):2183-2189. [FREE Full text] [doi: [10.1200/JCO.2011.38.0410](https://doi.org/10.1200/JCO.2011.38.0410)] [Medline: [22454421](#)]

36. Pro B, Advani R, Brice P, Bartlett NL, Rosenblatt JD, Illidge T, et al. Brentuximab vedotin (SGN-35) in patients with relapsed or refractory systemic anaplastic large-cell lymphoma: results of a phase II study. *J Clin Oncol*. Jun 20, 2012;30(18):2190-2196. [doi: [10.1200/JCO.2011.38.0402](https://doi.org/10.1200/JCO.2011.38.0402)] [Medline: [22614995](https://pubmed.ncbi.nlm.nih.gov/22614995/)]
37. Pro B, Advani R, Brice P, Bartlett N, Rosenblatt J, Illidge T. Three-year survival results from an ongoing phase 2 study of brentuximab vedotin in patients with relapsed or refractory systemic anaplastic large cell lymphoma. *Blood*. 2013;122(21):1809. [[FREE Full text](#)]
38. Fenstermacher DA, Wenham RM, Rollison DE, Dalton WS. Implementing personalized medicine in a cancer center. *Cancer J*. 2011;17(6):528-536. [[FREE Full text](#)] [doi: [10.1097/PPO.0b013e318238216e](https://doi.org/10.1097/PPO.0b013e318238216e)] [Medline: [22157297](https://pubmed.ncbi.nlm.nih.gov/22157297/)]
39. Craig BM, Han G, Munkin MK, Fenstermacher D. Simulating the contribution of a biospecimen and clinical data repository in a phase II clinical trial: a value of information analysis. *Stat Methods Med Res*. Aug 2016;25(4):1303-1312. [doi: [10.1177/0962280213480282](https://doi.org/10.1177/0962280213480282)] [Medline: [23503303](https://pubmed.ncbi.nlm.nih.gov/23503303/)]
40. Messina JL, Fenstermacher DA, Eschrich S, Qu X, Berglund AE, Lloyd MC, et al. 12-Chemokine gene signature identifies lymph node-like structures in melanoma: potential for patient selection for immunotherapy? *Sci Rep*. 2012;2:765. [[FREE Full text](#)] [doi: [10.1038/srep00765](https://doi.org/10.1038/srep00765)] [Medline: [23097687](https://pubmed.ncbi.nlm.nih.gov/23097687/)]
41. Ren Y, Zhang Y, Liu RZ, Fenstermacher DA, Wright KL, Teer JK, et al. JAK1 truncating mutations in gynecologic cancer define new role of cancer-associated protein tyrosine kinase aberrations. *Sci Rep*. Oct 24, 2013;3:3042. [[FREE Full text](#)] [doi: [10.1038/srep03042](https://doi.org/10.1038/srep03042)] [Medline: [24154688](https://pubmed.ncbi.nlm.nih.gov/24154688/)]
42. Seattle Genetics Inc. A phase 3 trial of brentuximab vedotin (sgn-35) versus physician's choice (methotrexate or bexarotene) in patients with cd30-positive cutaneous t-cell lymphoma. 2015. URL: <https://www.clinicaltrials.gov/ct2/show/NCT01578499> [accessed 2016-12-23] [[WebCite Cache ID 6my2N4LUK](#)]
43. Bartlett N, Smith M, Advani R, Feldman T, Savage K, Palanca-Wessels M. Brentuximab vedotin monotherapy in DLBCL patients with undetectable CD30: preliminary results from a phase 2 study. *Blood*. 2014;124(21):629.
44. Jacobsen ED, Sharman JP, Oki Y, Advani RH, Winter JN, Bello CM, et al. Brentuximab vedotin demonstrates objective responses in a phase 2 study of relapsed/refractory DLBCL with variable CD30 expression. *Blood*. Feb 26, 2015;125(9):1394-1402. [[FREE Full text](#)] [doi: [10.1182/blood-2014-09-598763](https://doi.org/10.1182/blood-2014-09-598763)] [Medline: [25573987](https://pubmed.ncbi.nlm.nih.gov/25573987/)]
45. Barrette K, van den Oord JJ, Garmyn M. Tissue microarray. *J Invest Dermatol*. Sep 2014;134(9):e24. [[FREE Full text](#)] [doi: [10.1038/jid.2014.277](https://doi.org/10.1038/jid.2014.277)] [Medline: [25120151](https://pubmed.ncbi.nlm.nih.gov/25120151/)]

## Abbreviations

**ADC:** antibody-drug conjugate  
**ASCT:** autologous stem cell transplant  
**CNV:** copy-number variation  
**CTCL:** cutaneous T-cell lymphoma  
**DLBCL:** diffuse large B-cell lymphoma  
**FFPE:** formalin-fixed paraffin-embedded  
**H&E:** hematoxylin and eosin  
**HL:** Hodgkin lymphoma  
**Ig:** immunoglobulin  
**IHC:** immunohistochemistry  
**MMAE:** microtubule-disrupting agent monomethyl auristatin E  
**R/R:** relapsed/refractory  
**sALCL:** systemic anaplastic large cell lymphoma  
**SNP:** single-nucleotide polymorphism  
**TCC:** Total Cancer Care

*Edited by G Eysenbach; submitted 11.01.17; peer-reviewed by Z Huang, Z Zhao; comments to author 02.02.17; revised version received 22.02.17; accepted 22.02.17; published 20.03.17*

### *Please cite as:*

Li B, Eschrich SA, Berglund A, Mitchell M, Fenstermacher D, Danaee H, Dai H, Sullivan D, Trepicchio WL, Dalton WS  
 Use of the Total Cancer Care System to Enrich Screening for CD30-Positive Solid Tumors for Patient Enrollment Into a Brentuximab Vedotin Clinical Trial: A Pilot Study to Evaluate Feasibility  
*JMIR Res Protoc* 2017;6(3):e45  
 URL: <http://www.researchprotocols.org/2017/3/e45/>  
 doi: [10.2196/resprot.7289](https://doi.org/10.2196/resprot.7289)  
 PMID: [28320689](https://pubmed.ncbi.nlm.nih.gov/28320689/)

©Bin Li, Steven A Eschrich, Anders Berglund, Melissa Mitchell, David Fenstermacher, Hadi Danaee, Hongyue Dai, Daniel Sullivan, William L Trepicchio, William S Dalton. Originally published in JMIR Research Protocols (<http://www.researchprotocols.org>), 20.03.2017. This is an open-access article distributed under the terms of the Creative Commons Attribution License (<http://creativecommons.org/licenses/by/2.0/>), which permits unrestricted use, distribution, and reproduction in any medium, provided the original work, first published in JMIR Research Protocols, is properly cited. The complete bibliographic information, a link to the original publication on <http://www.researchprotocols.org>, as well as this copyright and license information must be included.